

AUTO FOCUS MEASURING MICROSCOPES

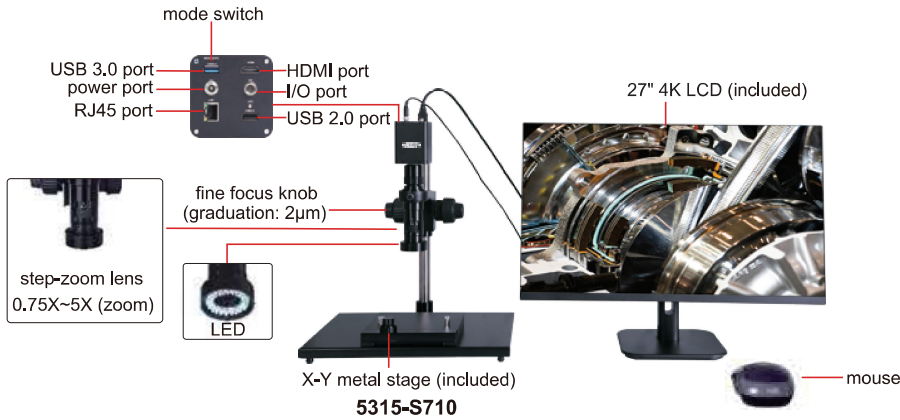


AUTO FOCUS

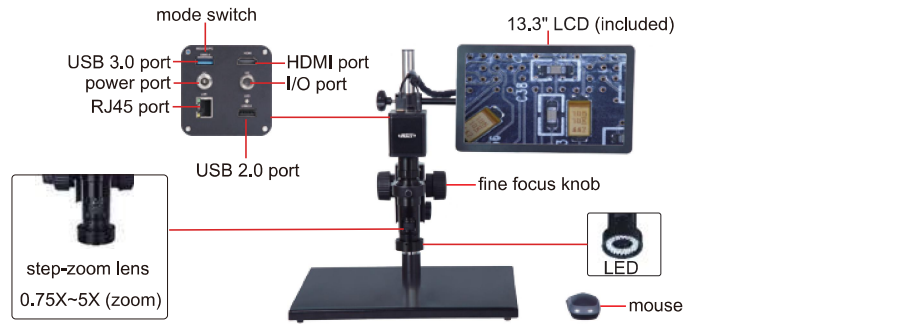
IMAGE TRANSMISSION

FOCUS STACKING

IMAGE STICHING



5315-S710



5315-AF103

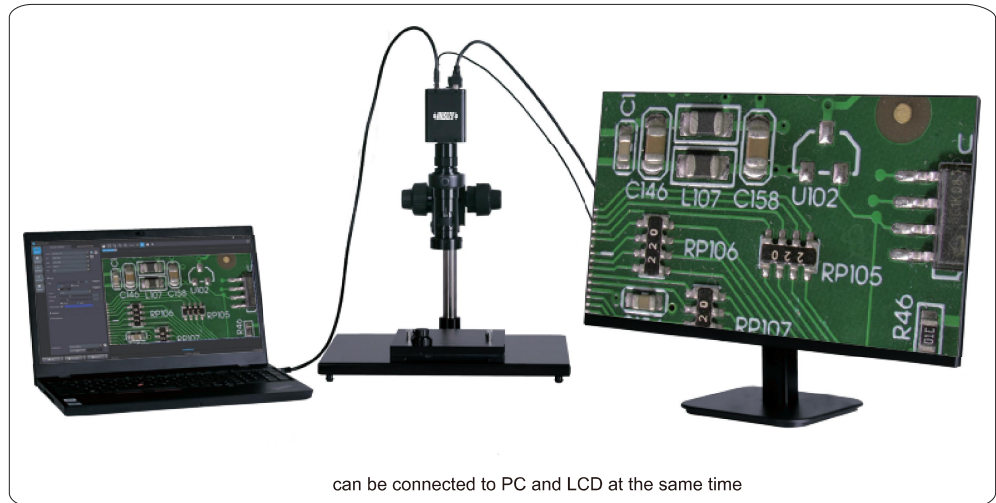
- High-definition image
- Take pictures and videos, save to USB flash disk
- Measurement results can be sent to Excel
- Auto focus
- Automatic white balance and exposure
- Built-in measurement software



0.5X camera adapter (included)



1X auxiliary objective (included)



can be connected to PC and LCD at the same time



stage moving knob
X-Y metal stage (X-Y travel: 100×86mm)



calibration plate (included)



1X camera adapter (optional)



2X auxiliary objective (optional)

SPECIFICATION

Code	5315-S710	5315-AF103
X-Y metal stage	with	without
Magnification	28X~185X (on 27" LCD)	20X~123X (on 13.3" LCD)
Sensor	1/1.7" CMOS	1/2.8" CMOS
Pixel	12M	2M
Resolution	4000×3000	1920×1080
Frame rate	30fps	60fps
Out put	HDMI/USB/LAN	HDMI/USB/LAN
Power supply	power adapter	power adapter
Dimension (L×W×H)	570×300×430mm	570×300×430mm
Net weight	15kg	6.5kg

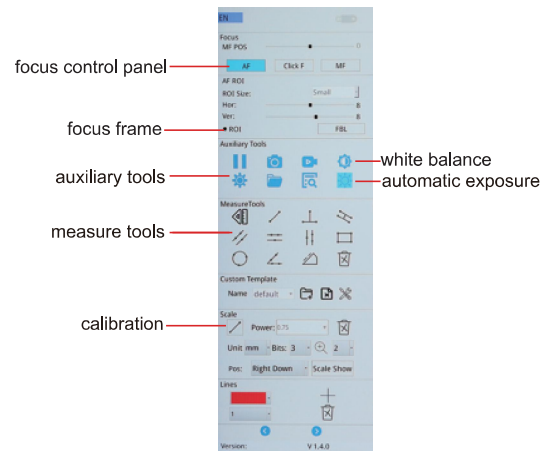
MAGNIFICATION, FOCUS DISTANCE AND VIEW FIELD

Code	Specification	Camera adapter	
		0.5X (included)	1X (optional)
5315-AF103	magnification	20~123X	40~246X
	focus distance	48~84mm	48~84mm
	view field	13×7~2.2×1mm	6.5×3.5~1.1×0.5mm
	measuring accuracy	±0.02mm	±0.02mm
5315-S710	magnification	28~185X	56~370X
	focus distance	73±2mm	73±2mm
	view field	18.2×11.0~3.2×1.9mm	8.6×5.5~1.6×0.9mm
	measuring accuracy	±0.02mm	±0.02mm

STANDARD DELIVERY

Code	5315-S710 (with stage)	5315-AF103 (without stage)
Main unit	1 pc	1 pc
LCD	1 pc	1 pc
0.5X camera adapter	1 pc	1 pc
1X auxiliary objective	1 pc	1 pc
Calibration plate	1 pc	1 pc
16G USB flash drive	1 pc	1 pc
Mouse	1 pc	1 pc
X-Y metal stage	1 pc	/
HDMI	1 pc	1 pc

SOFTWARE FOR LCD (INCLUDED)



OPTIONAL ACCESSORY

1X camera adapter	ISM-DL-CA1X
2X auxiliary objective	ISM-DL-OB2X
Computer	ISM-DL-COMPUTER
LED light	
Auxiliary objective	

PROFESSIONAL SOFTWARE (INCLUDED, FOR COMPUTER)

